

DYSLEXIC- FRIENDLY PRINT MATERIALS IN THE LIBRARY

Presented By : Cathrine Trautman
Northville District Library

HELLO

I'm Cathrine Trautman.

I'm a Youth Services Librarian at Northville District Library with dyslexia. I received my diagnosis at 21 years old, but before that diagnosis I had taught myself my own coping mechanisms to get through higher education.



WHAT IS A PRINT DISABILITY?

George Kerscher coined the term "print disabled" (circa 1988-1989) to describe persons who could not access print.

print disabled, noun; print-disabled, adjective

"A person who cannot effectively read print because of a visual, physical, perceptual, developmental, cognitive, or learning disability."

WHAT IS DYSLEXIA?



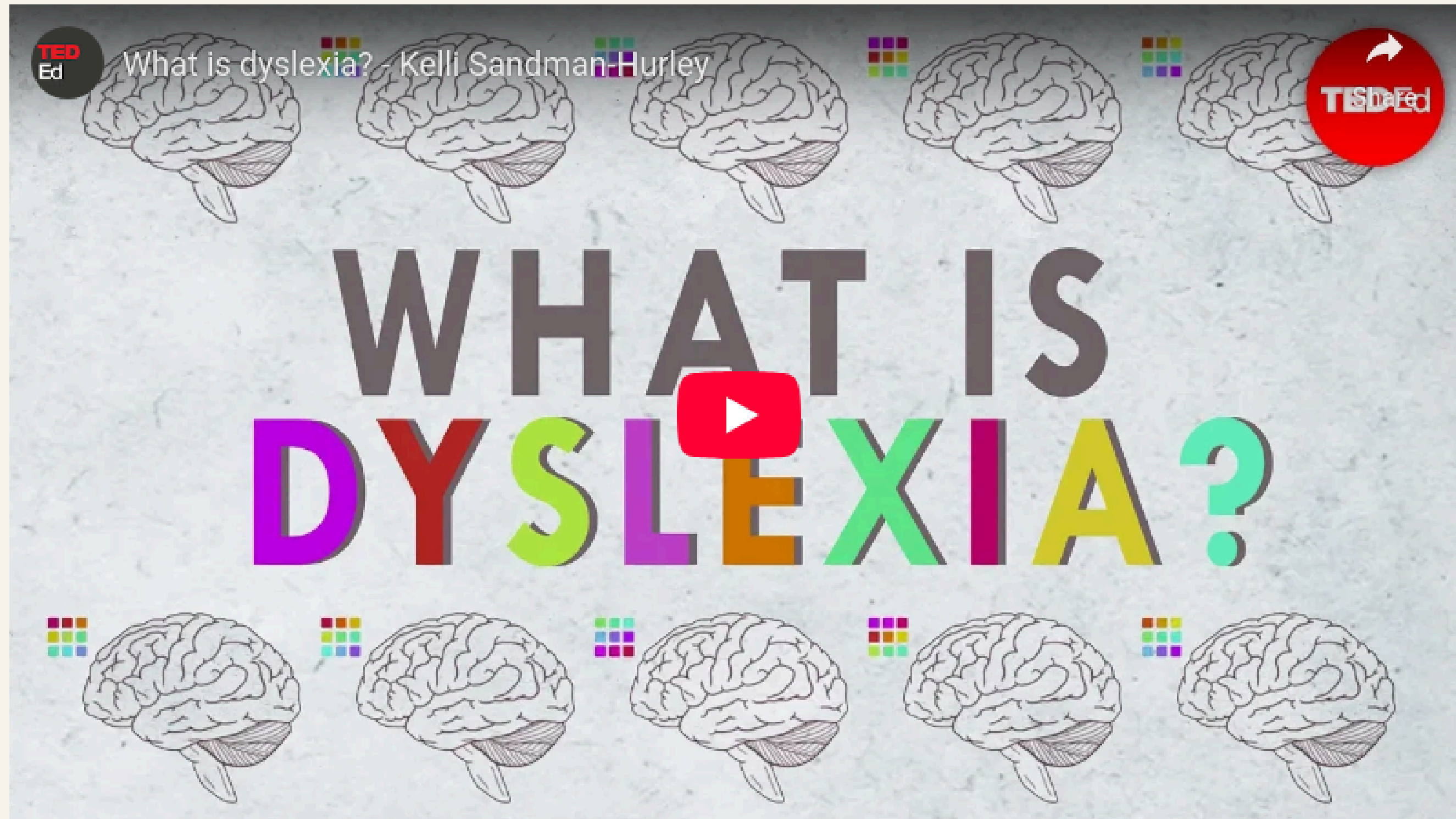
Dyslexia is a learning disability that makes reading and language-related tasks harder.

WHAT IS DYSLEXIA?

Typically diagnosed in childhood and is a lifelong condition. This is known as “developmental dyslexia.”

Dyslexia falls under the umbrella of “specific learning disorder” with three main subtypes:

- Reading (dyslexia)
- Writing (dysgraphia)
- Math (dyscalculia)



QUICK NUMBERS

- Approximately 20% of the population has some form of Dyslexia
- Five different forms of developmental dyslexia
- Three levels of severity
- 60% show common co-existing conditions
- There are 15 areas where symptoms can be recognized
- Most individuals show at least 10 symptoms
- Only about 1 in 4 children with dyslexia are identified
- Twice as common in boys than girls

COMMON MYTHS

- Myth 1
Seeing letters backwards or upside down
- Myth 2
A problem with vision
- Myth 3
Laziness, lack of motivation, lack of intelligence
- Myth 4
Something that you outgrow

DYSLEXIC-FRIENDLY PRINT MATERIAL BACKGROUND

- Have been available for approximately 20 years
- More prevalent in the United Kingdom and Australia
- Growing availability in the United States

DYSLEXIC-FRIENDLY CHARACTERISTICS

Font

- Sans Serif Font
 - Arial, Verdana, Comic Sans
- Specialized Font
 - Dyslexie, OpenDyslexic, Lexie Readable
- Font size - 12-14 pt or larger
- Larger inner letter spacing
- Larger word spacing
- Larger line spacing
- Use **Bold** for emphasis
- Slight slanting

Format

- Single color backgrounds
- Dark color text on light, not white, background
- Wider margins
- Matte paper

WHAT MAKES A FONT DYSLEXIA-FRIENDLY?

Dyslexie

a b c d f e g h i j k l m

DISTINCT LETTER SHAPES

Fonts like **Dyslexie** prioritize unique letter designs to minimize confusion.

Aa Bb Cc Dd

WEIGHTED BOTTOMS

OpenDyslexic uses weighted bottoms to prevent letter swapping, aiding readability.

Verdana

AMPLE LETTER SPACING

Fonts like **Verdana** incorporate spacious spacing for clear differentiation.

Aa Bb Cc Dd

SIMPLE SERIFS

Lexie Readable employs serif designs with simplicity for improved comprehension.

Comic Sans

a b c d f e g h i j k l m

INFORMAL YET CLEAR

Comic Sans, known for informality, remains a dyslexia-friendly choice due to its readability.

Arial

a b c d f e g h i j k l m

READABILITY OVER COMPLEXITY

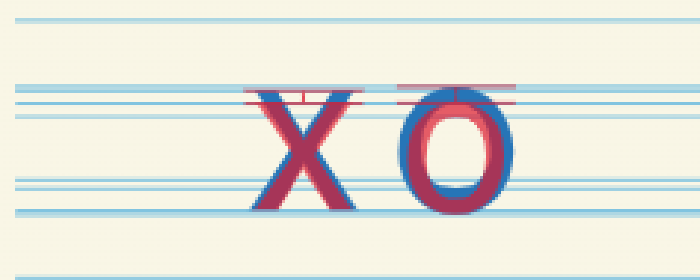
Arial, a clean sans-serif font, prioritizes straightforward reading for better accessibility.

DYSLEXIE



abc

HEAVY
BOTTOM



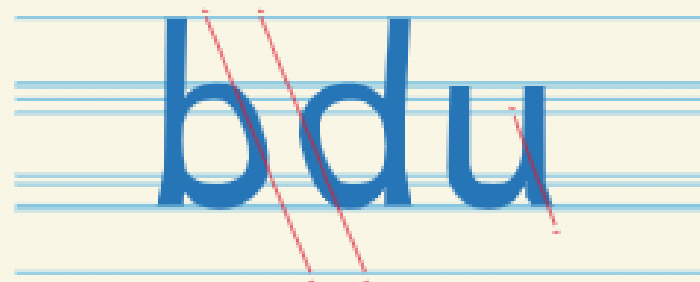
xo

INCREASED
X-HEIGHT



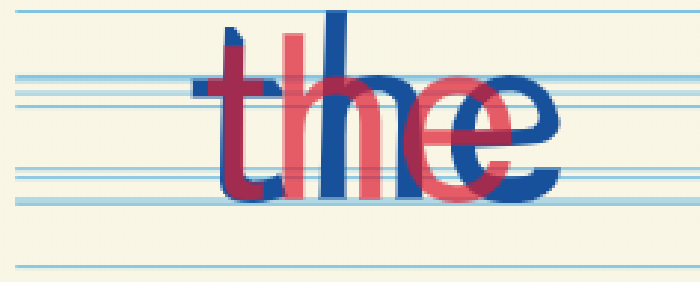
acs

BIGGER
OPENINGS



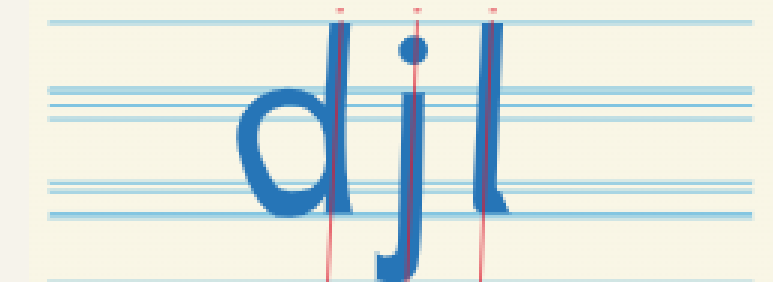
bdu

DISTINCTIVE
SHAPES



the

IMPROVED
SPACING



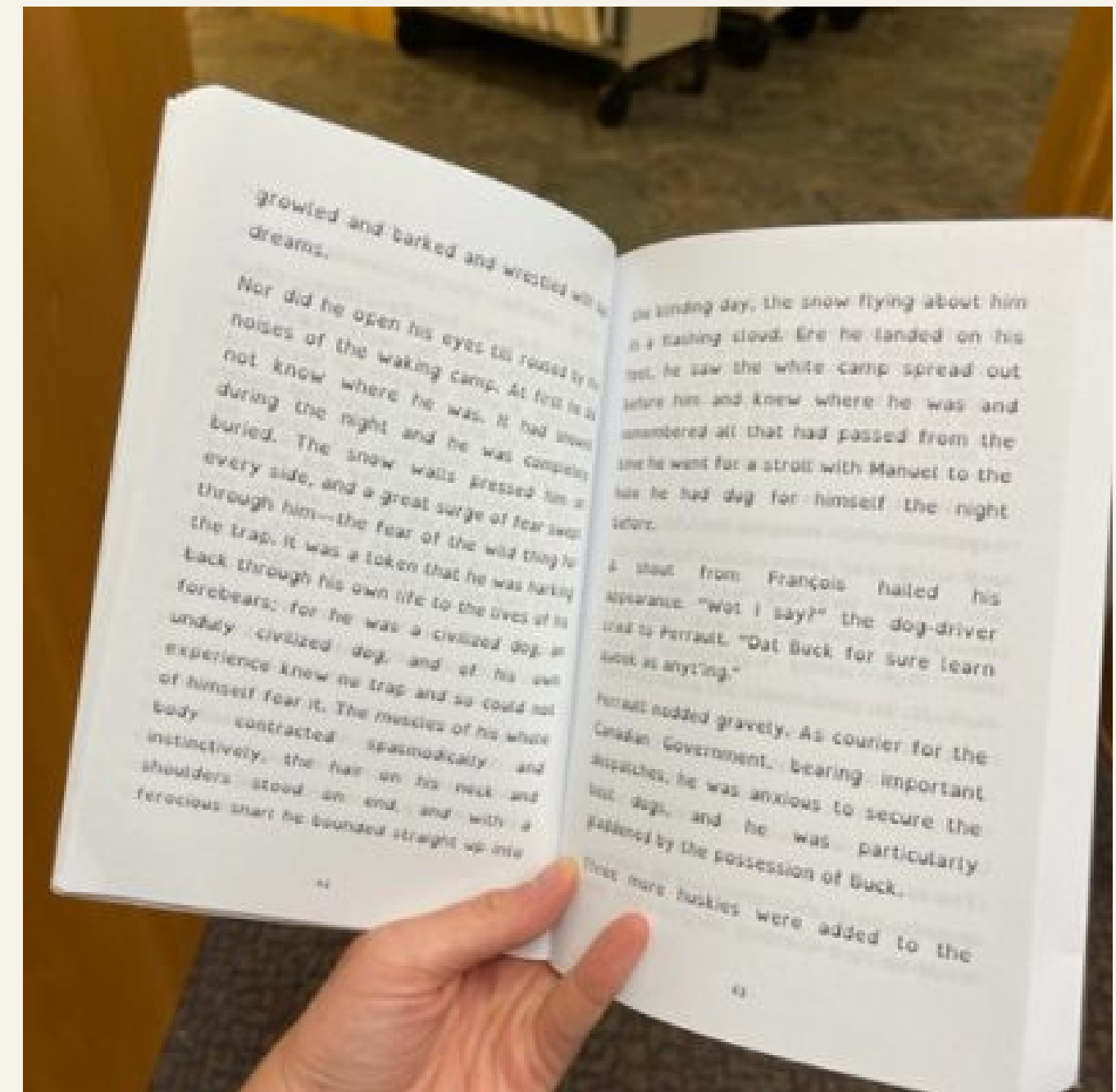
djl

SLANTED
LETTERS

OPEN DYSLEXIC COMPARISON

Gill Sans	rn m	MW	dpqb	llijj
Verdana	rn m	MW	dpqb	l1IijJ
OpenDyslexic	rn m	MW	dpqb	l1liijJ
Times	rn m	MW	dpqb	l1IijJ
Helvetica	rn m	MW	dpqb	l1liijJ

EXAMPLES



VENDORS

Ordering

- Baker and Taylor
- Ingram

Shopping

- Amazon
- dyslexicbooks.com
- eBay
- AbeBooks
- Thriftbooks

Each option has pros and cons.
Things to consider:

- Access
- Information
- Cost
- Shipping
- Return policy

SEARCH TERMS

- Dyslexic-Friendly
- Dyslexia-Friendly
- Dyslexic-Inclusive
- Dyslexia-Inclusive
- Dyslexie Font
- OpenDyslexic Font
- Dyslexia Font
- Dyslexie
- OpenDyslexic
- Dyslexic books

OUR COLLECTION

- **Juvenile**
 - Picture Books
 - Early Readers
 - Chapter Books
 - Nonfiction
- **Adult**
 - Classic Fiction



OUR COLLECTION



Dyslexic-Friendly materials are given an inhouse designed sticker to differentiate them from the regular collections.

We chose to put these items into their own collections, but items could be interfiled if desired.

Adult is located after the Large Print collection.

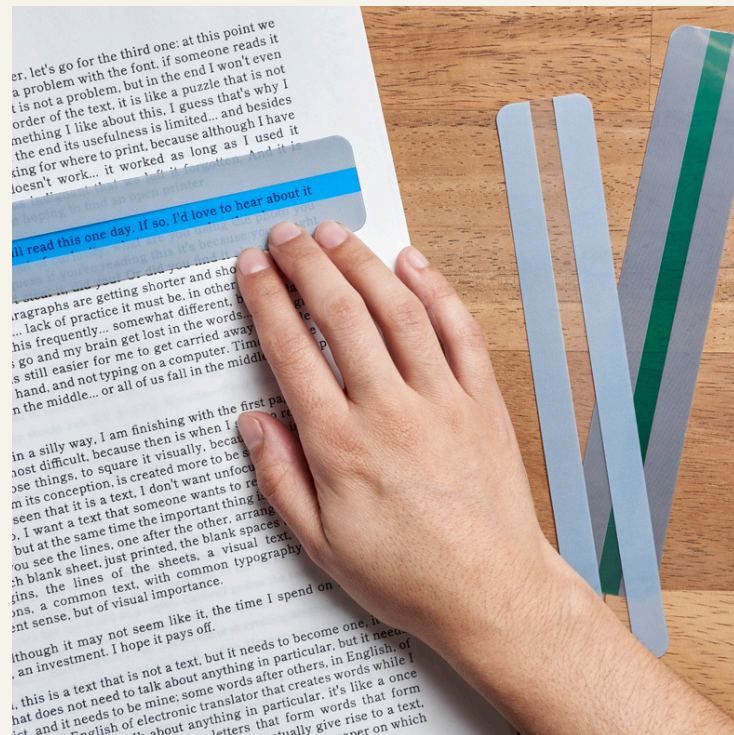
Juvenile is located on its own shelving near the Juvenile Graphic Novel collection.

MORE TOOLS

Color overlays

Window bookmarks

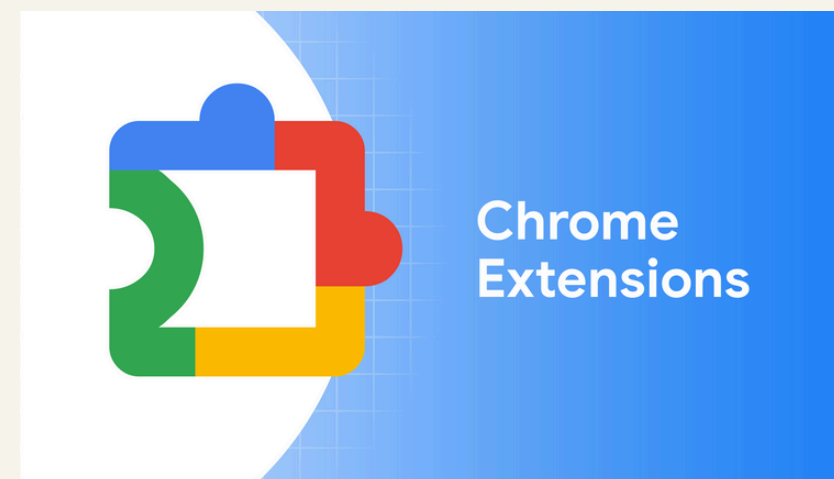
Word tracking reading guides



Digital reader pens

Chrome Extensions:

- OpenDyslexic
- Dyslexia Friendly
- Google Lexend



UserWay
Web Accessibility

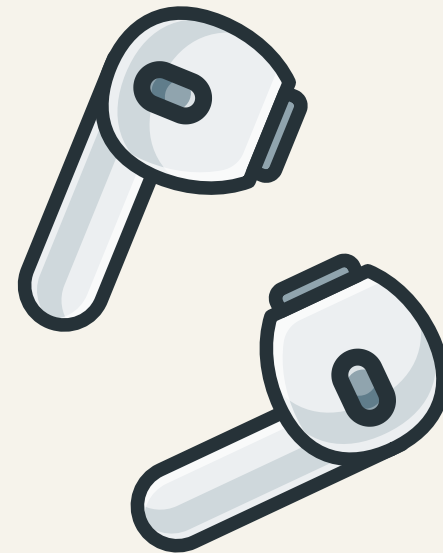
3 THINGS YOU CAN OFFER NOW



Graphic Novels



Audiobooks



eBooks



REFERENCES AND RESOURCES

The Best Fonts for Dyslexia (Guidelines for Website Owners)

Best Fonts for Dyslexia and Why They Work

Cleveland Clinic: Dyslexia

Common Co-Existing Conditions with Dyslexia

Creating a dyslexia friendly workplace

The Definition of "Print Disabled"

Dyslexia Statistics- Facts and Figures

DYSLEXIE FONT DESIGN BASICS

How dyslexia-friendly fonts are rewriting the book

Test for Dyslexia: 37 Common Traits

What Are the Different Types of Dyslexia? (Plus How To Identify the Signs)



THANK YOU

Cathrine Trautman
ctroutman@northvillelibrary.org